



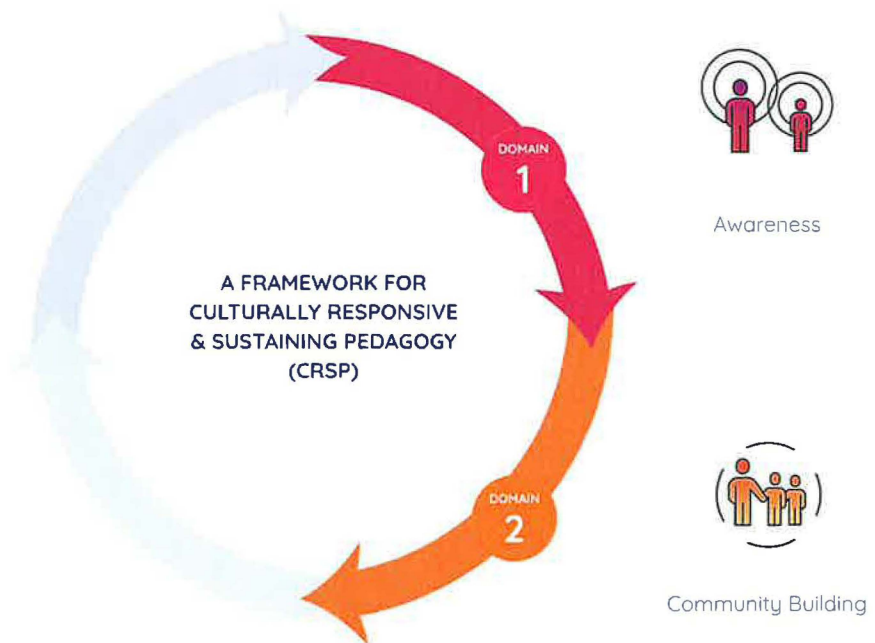
Domain #1: Awareness

Domain Explanation

When we start with ourselves and recognize that we all operate within an inequitable system, we can start to understand how systemic inequity translates into our classrooms and schools. So in this domain, we build awareness about all the layers of context around our students and we build awareness of who is carrying the cognitive load. The goal is to use this awareness to move away from compliance-oriented teaching that produces passive learners.

What might this look like?

- Develop socio-cultural awareness
- Develop awareness about who is carrying the cognitive load





Domain #2: Community Building

Domain Explanation

Rooted in this awareness, we learn to build community and nurture academic mindsets so that students are engaging in productive struggle and supporting one another through challenging tasks.

What might this look like?

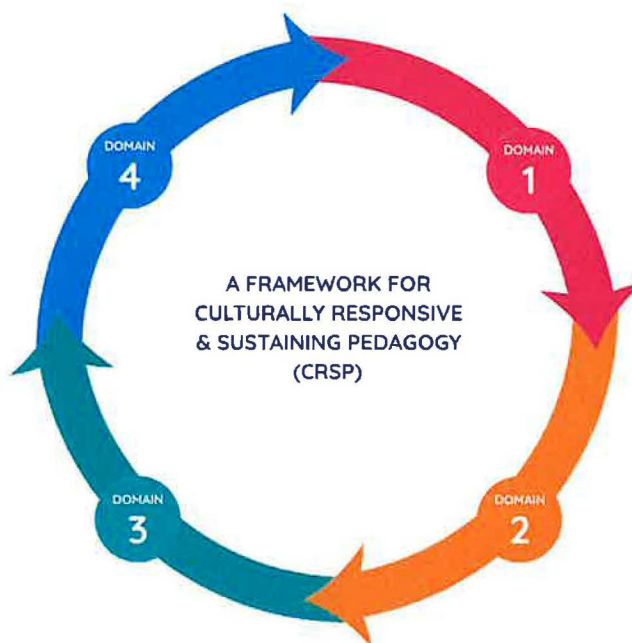
- Build a culture of trust and belonging
- Build a culture of thinking





Domain #3: Cognitive Development

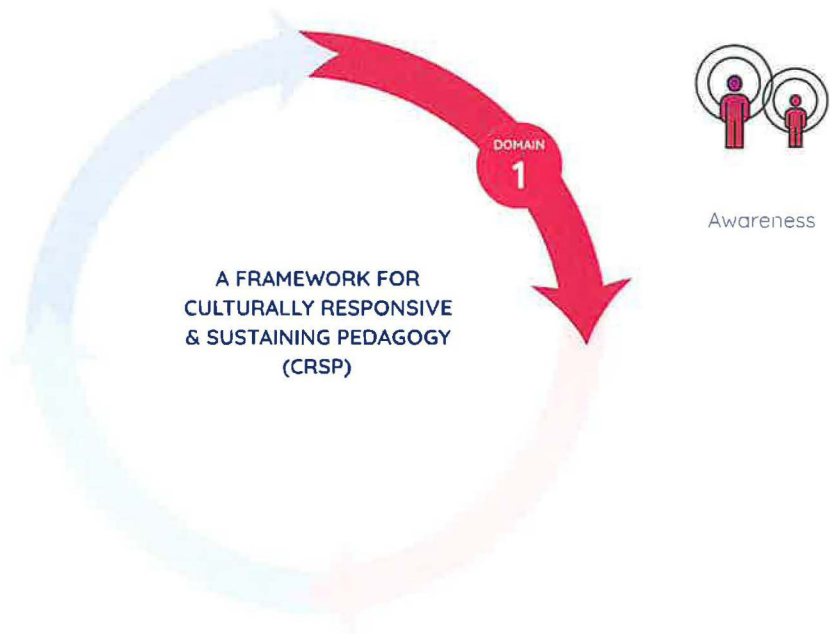
| | |
|-----------------------------------|---|
| Domain Explanation | Leveraging relationships, a mindset around equity, and learning science to disrupt a culture of low expectations & shift the cognitive load to students by developing their information processing skills. |
| What might this look like? | <ul style="list-style-type: none">• Leverage students' identities and interests to make learning meaningful• Scaffold and develop students' thinking skills• Use data and assessment to support students to own their learning journeys |





Domain #4: Critical Consciousness

| | |
|-----------------------------------|--|
| Domain Explanation | Supporting students to understand how cognitive skills empower them to move from critical reflection to critical motivation to critical action so they can transform their lives, communities, and society |
| What might this look like? | <ul style="list-style-type: none">• Engage students in critical reflection• Nurture critical motivation• Inspire critical action |





Domain #1: Awareness

Domain Explanation

When we start with ourselves and recognize that we all operate within an inequitable system, we can start to understand how systemic inequity translates into our classrooms and schools. So in this domain, we build awareness about all the layers of context around our students and we build awareness of who is carrying the cognitive load. The goal is to use this awareness to move away from compliance-oriented teaching that produces passive learners.

Key Practices

- Develop socio-cultural awareness
- Develop awareness about who is carrying the cognitive load